

City of Laredo Health Department



Public Health
Prevent. Promote. Protect.

COVID-19 Global Status Update

SITUATION IN NUMBERS

Globally
125,048

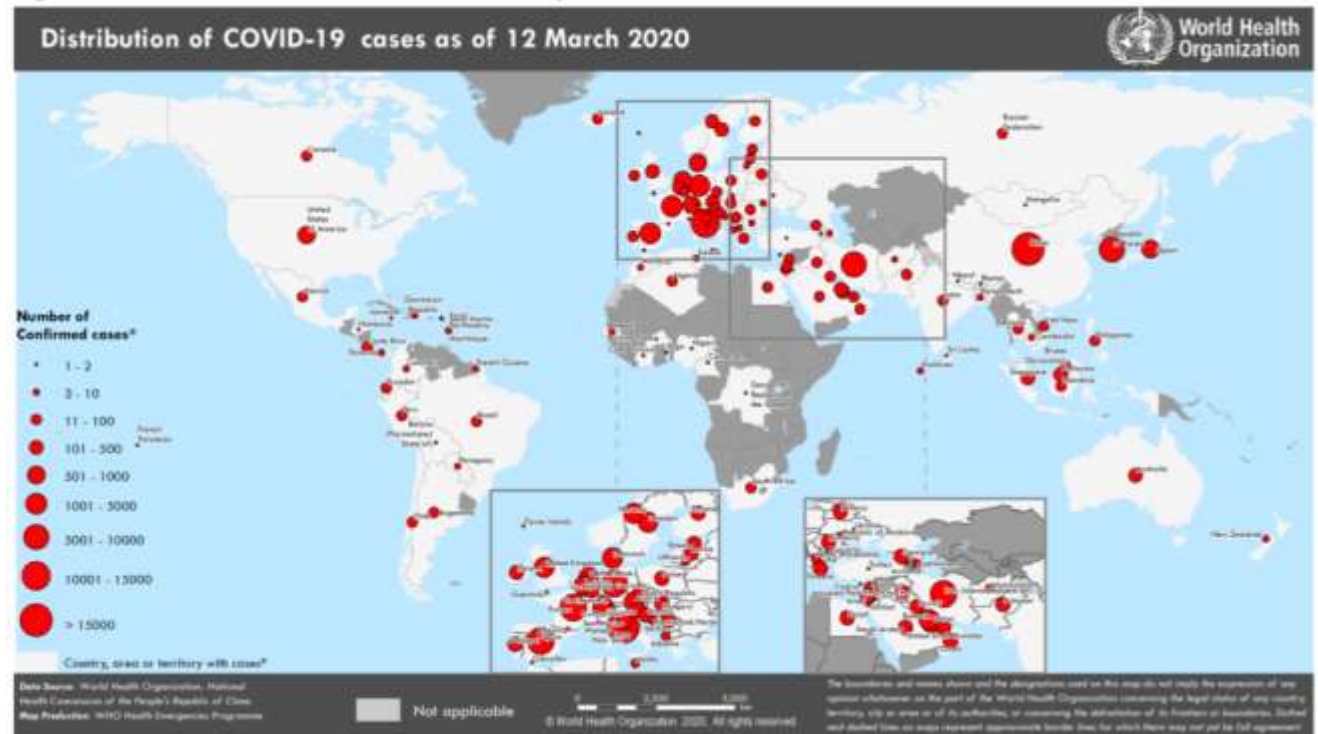
China
80,981

Outside China
44,067

Global Deaths: 4613

WHO RISK ASSESSMENT

China – Very High
Regional Level – Very High
Global Level – Very High

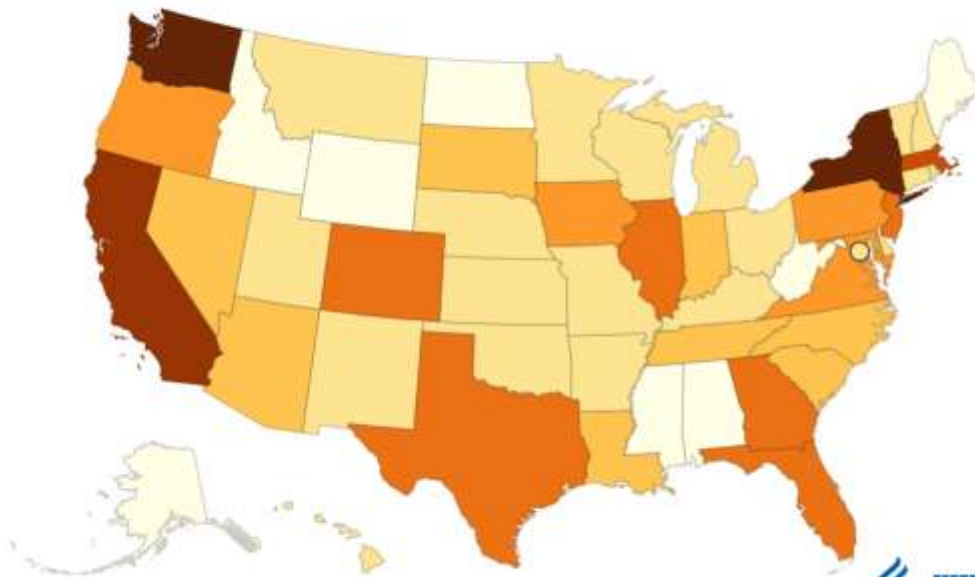


REV: 03/13/2020 @ 08:24 AM



COVID-19 US Status Update

States Reporting Cases of COVID-19 to CDC*



Territories AS GU MH FM MP PW PR VI



COVID-19 US Status Update

Confirmed Cases in the United States by CDC as of 03/13/2020 @ 08:30 AM	
	Confirmed & Presumptive Positive
Travel - Related	125
Person-to-Person Spread	106
Under Investigation	988
Total Cases	1,215
Confirmed Persons Repatriated to the United States and Tested by CDC	
Wuhan, China	3
Diamond Princess Cruise Ship	46
Total	49
Deaths	
	Confirmed & Presumptive Positive
Total Deaths	36

➤ **43 States Reporting Cases including District of Columbia**

➤ **15 States with No Confirmed Cases:**

- Idaho
- Montana
- Wyoming
- North Dakota
- South Dakota
- Michigan
- Ohio

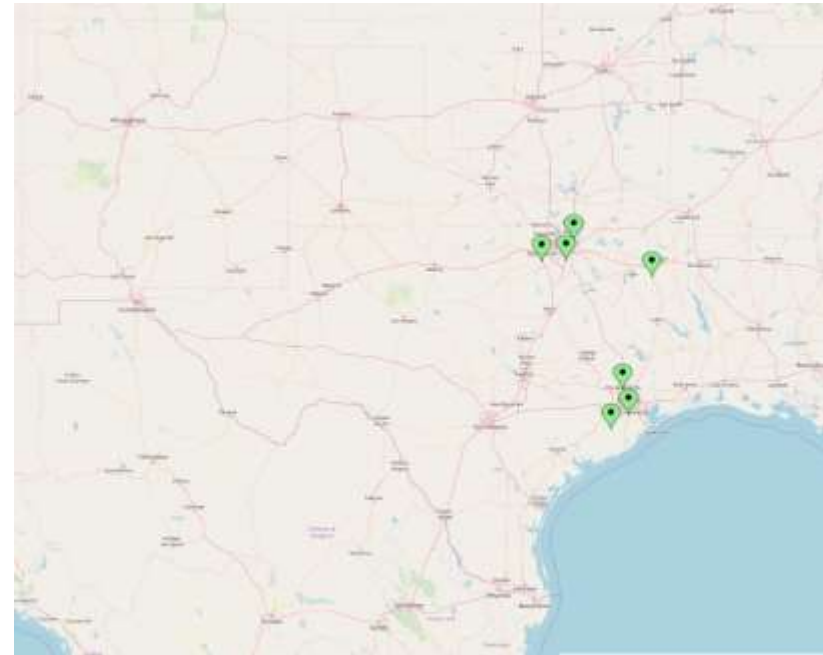
- West Virginia
- Maine
- Delaware
- New Mexico
- Arkansas
- Mississippi
- Alabama
- Alaska



COVID-19 Texas Status Update

Texas COVID-19 Cases, 3/12/2020

County of Residence	Number of Cases
Collin	3
Dallas	3
Fort Bend	6
Gregg	1
Harris	8
Montgomery	1
Tarrant	1
Total	23





What are the symptoms of COVID-19?

- More than **80%** have mild to no symptoms.
- When the virus does cause symptoms, common ones include cold like (body aches, coughing, nasal congestion, runny nose)
- COVID-19 can cause more severe symptoms like high fever, severe cough and shortness of breath, which often indicates **pneumonia**.





How does coronavirus spread?

- The virus is thought to spread mainly from person-to-person.
- Between people who are in close contact with one another (within about 3-6 feet).
- Through respiratory droplets produced when an infected person coughs or sneezes.
- These droplets can land in the mouths or noses of people who are nearby or possibly be inhaled into the lungs.



COVID-19 What Do We Know?

Who is at highest risk for getting very sick from COVID-19?

- Older people, and those with underlying medical problems like chronic bronchitis, emphysema, heart failure, or diabetes, are more likely to develop serious illness.



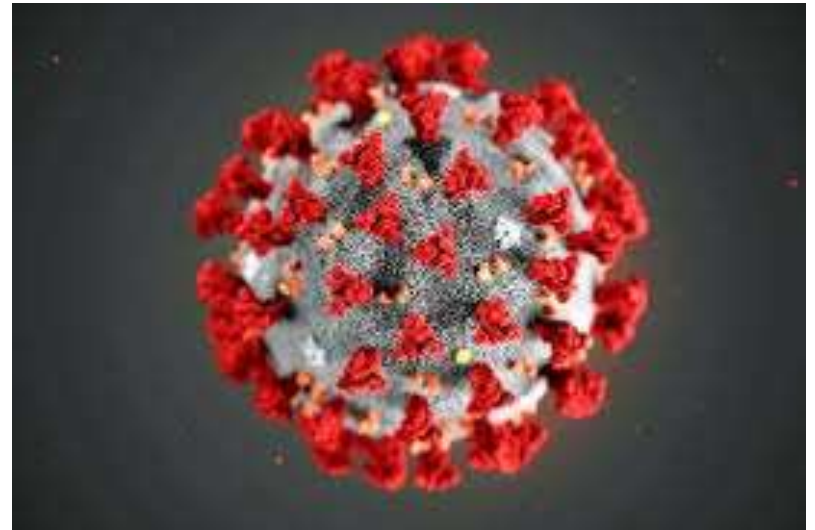
COVID-19 What Do We Know?

Is there an antiviral treatment for COVID-19?

- Currently there is no specific antiviral treatment for COVID-19.

What treatments *are* available to treat coronavirus?

- Currently there is no specific antiviral treatment for COVID-19. However, similar to treatment of any viral infection, these measures can help:
 - While you don't need to stay in bed, you should get plenty of rest.
 - Stay well hydrated.
 - Take acetaminophen, ibuprofen, or naproxen to reduce fever and ease aches and pains.



COVID-19 Prevention

What can I do to protect myself and others from COVID-19?

The following actions help prevent the spread of COVID-19, as well as other coronaviruses and influenza:

- Avoid close contact with people who are sick.
- Avoid touching your eyes, nose, and mouth without washing your hands first.
- Stay home when you are sick.
- Cover your cough or sneeze with a tissue (cough into your elbow), then throw the tissue in the trash, wash your hands.
- Clean and disinfect frequently touched objects and surfaces using a regular household cleaning spray or wipe.
- Wash your hands often with soap and water.



COVID-19 Prevention



COVID-19 Prevention

Should I wear a facemask?

- **Face masks are not recommended** for the general public in the US.
- Some health facilities require people to wear a mask under certain circumstances (persn with TB).
- If you **have respiratory symptoms** like coughing or sneezing, **experts recommend wearing a mask to protect others.** This may help contain droplets containing any type of virus, including the flu



COVID-19 What Can We Expect ?

Preparing our Community for Potential Spread of COVID-19

- Increased surveillance
- Preparing first responders, healthcare providers, and health systems and conducting simulations
- Reinforcing public health readiness
- Supporting communities, businesses, and schools



COVID-19 What Can We Expect ?

- More cases of COVID-19 are likely to be identified in the coming days
- Person-to-person spread will continue to occur, including in communities in the United States.
- It's likely that at some point, community widespread sustained transmission may occur, but there are no restrictions to public gatherings at this time.
- Covid-19 will become another strain of corona virus just as what happened with H1N1



COVID-19 Reporting

Reporting

- For all suspect or probable cases please contact:
 - » **City of Laredo Epidemiology**
 - » **Main:** (956)-795-4954
 - » **Fax:** (956)-795-4953
- If you are a healthcare provider, be on the look-out for:
 - People who recently traveled from Level III counties or another affected area and who have symptoms associated with COVID-19, and
 - People who have been in close contact with someone with COVID-19 or pneumonia of unknown cause.
- If you are a resident in a community where person-to-person spread of COVID-19 has been detected and you develop COVID-19 symptoms, call your healthcare provider and Laredo Health to tell them about your symptoms.
- Laredo Health is in constant communication with all health providers within jurisdiction to expedite the testing or rule out and potential cases



COVID-19 Testing

- CDC's has developed a rRT-PCR test COVID-19 testing kits and equip state and local public health labs with testing capacity
- CDC, every state and laboratory response network (LRN) labs have the capability to test in limited quantities
- Private Laboratories are testing – must report testing to Laredo Health and be confirmed by CDC
- Currently, all COVID-19 public health (Laredo Health Department) testing is only for ill persons
- Laredo Health has made official request to the International Reagent Resource (IRR) for COVID-19 testing kits



COVID-19 Diagnosis

- For people who are ill with COVID-19, but are not sick enough to be hospitalized, please follow [CDC guidance on how to reduce the risk of spreading your illness to others](#).
- People who are mildly ill with COVID-19 are able to isolate at home during their illness.
- Laredo Health will provide and will ask **Patient Under Investigation (PUI)** to follow instructions during this time. **Cooperation is integral to the ongoing public health response to try to slow spread of this virus.**
- If you have been to any affected area or have been exposed to someone sick with COVID-19 in the last 14 days, individuals will face [some limitations on your movement and activity](#) for up to 14 days. These persons will be classified as **Patients Under Monitoring (PUM)**.



COVID-19 Local 24/7 Hotline

For any Questions, Comments or Concerns
Please Contact:

(956) 795-4954





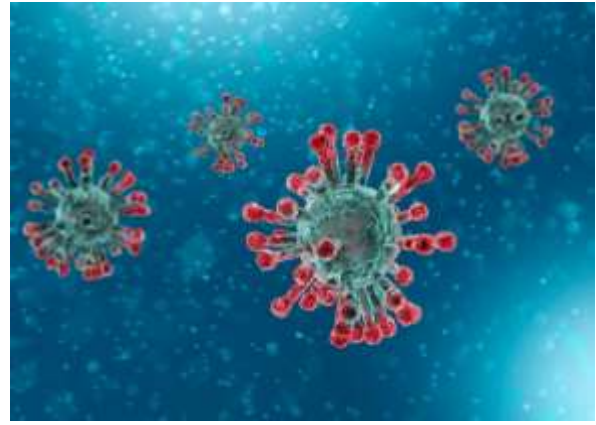
City of Laredo Health Department



Public Health
Prevent. Promote. Protect.



2600 Cedar Avenue
Laredo, Texas 78040
Phone: (956) 795-4900
Fax: (956) 726-2632
E-mail: CLHD@ci.laredo.tx.us
www.cityoflaredohealth.com



@LaredoHealth



@CityofLaredoHealthDepartment



@LaredoHealth



@LaredoHealth

